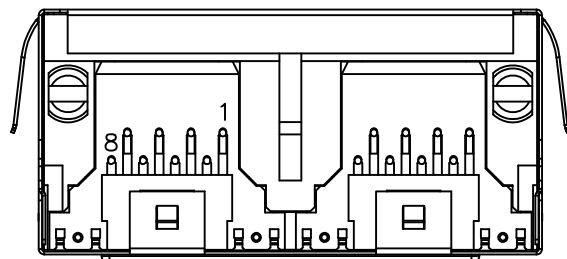


MATERIALS

HOUSING: THERMOPLASTIC (UL 94V-0)
SHELL: COPPER ALLOY, NICKEL PLATING
TERMINAL: COPPER ALLOY $\varnothing 0.46\text{mm}$, GOLD PLATED

SPECIFICATION

CURRENT RATING: 1.5 AMP MAX
DIELECTRIC WITHSTANDING: 500V AC FOR ONE MINUTE
CONTACT RESISTANCE: 30m OHMS MAX
INSULATION RESISTANCE: 1000M OHMS MIN AT DC 500V
OPERATION TEMPERATURE: $-40^{\circ}\text{C} \sim +85^{\circ}\text{C}$



PART NUMBER:

3MJDD - 1 2 8 8 * - 1 1 2

SERIES

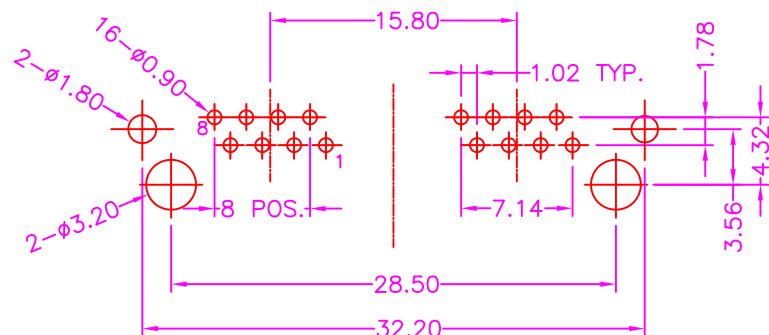
1X2 PORT

8 POSITION & 8 CONTACT

TRAY PACKAGE


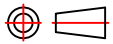
CONTACT PLATED OPTION

1: GOLD FLASH
3: 3u" GOLD
5: 5u" GOLD
7: 15u" GOLD
9: 30u" GOLD
11: 6u" GOLD



P.C.B LAYOUT
TOP VIEW ± 0.05

A	RELEASE	2013.6.27
REV.	DESCRIPTION	DATE

 Cyberconn Technology Co., Ltd. www.cyberconn.com.tw Tel: +886-3-4951314						
TOLERANCES	TITLE	MODULAR JACK SERIES				
X.X ± 0.3 X.XX ± 0.2 X.XXX ± 0.1 Angle $\pm 5^{\circ}$		1X2 GANG RJ45, PCB MOUNT, SIDE ENTRY METAL SHIELD, WITH SPRING				
	DRAWN BY	CHECKED BY		APPROVED BY		
	Janice	Lion		Benson		
10003	UNIT	SCALE	SIZE	DRAW NO.	REV.	Sheet
	MM	NONE	A4	3MJDD-002	A	1/1

Stanyl® 46HF4530 (Provisional)

Property Data

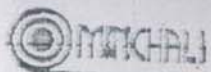
PA46-GF30

30% Glass Reinforced, Heat Stabilized, High Flow for E&E applications

Properties	Typical Data	Unit	Test Method
RHEOLOGICAL PROPERTIES		dry / cond	
Molding shrinkage (parallel)	0.5 / *	%	ISO 294-4
Molding shrinkage (normal)	1.3 / *	%	ISO 294-4
MECHANICAL PROPERTIES		dry / cond	
Tensile modulus	10000 / 6000	MPa	ISO 527-1/-2
Tensile modulus (120°C)	5500	MPa	ISO 527-1/-2
Tensile modulus (160°C)	5000	MPa	ISO 527-1/-2
Stress at break	210 / 115	MPa	ISO 527-1/-2
Stress at break (120°C)	125	MPa	ISO 527-1/-2
Stress at break (160°C)	110	MPa	ISO 527-1/-2
Strain at break	3 / 6	%	ISO 527-1/-2
Strain at break (120°C)	5.5	%	ISO 527-1/-2
Strain at break (160°C)	5.5	%	ISO 527-1/-2
Flexural modulus	9000 / 5500	MPa	ISO 178
Charpy impact strength (+23°C)	60 / 90	kJ/m ²	ISO 179/1eU
Charpy impact strength (-30°C)	60 / 60	kJ/m ²	ISO 179/1eU
Charpy notched impact strength (+23°C)	13 / 17	kJ/m ²	ISO 179/1eA
Charpy notched impact strength (-30°C)	12 / 12	kJ/m ²	ISO 179/1eA
THERMAL PROPERTIES		dry / cond	
Melting temperature (10°C/min)	295 / *	°C	ISO 11357-1/-3
Temp. of deflection under load (1.80 MPa)	290 / *	°C	ISO 75-1/-2
Coeff. of linear therm. expansion (parallel)	0.25 / *	E-4/°C	ISO 11359-1/-2
Coeff. of linear therm. expansion (normal)	0.6 / *	E-4/°C	ISO 11359-1/-2
Burning Behav. at 1.5 mm nom. thickn.	HB / *	class	IEC 60695-11-10
Thickness tested	1.5 / *	mm	IEC 60695-11-10
Burning Behav. at thickness h	HB / *	class	IEC 60695-11-10
Thickness tested	0.75 / *	mm	IEC 60695-11-10
ELECTRICAL PROPERTIES		dry / cond	
Volume resistivity	1E13 / 1E9	Ohm*m	IEC 60093
Electric strength	30 / 25	kV/mm	IEC 60243-1
OTHER PROPERTIES		dry / cond	
Humidity absorption	2.6 / *	%	Sim. to ISO 62
Density	1410 / -	kg/m ³	ISO 1183

06.04.2007

All information supplied by or on behalf of DSM in relation to its products, whether in the nature of data, recommendations or otherwise, is supported by research and, in good faith, believed reliable, but DSM assumes no liability and makes no warranties of any kind, express or implied, including, but not limited to, those of title, merchantability, fitness for a particular purpose or non-infringement or any warranty arising from a course of dealing, usage, or trade practice whatsoever in respect of application, processing or use made of the aforementioned information or product. The user assumes all responsibility for the use of all information provided and shall verify quality and other properties or any consequence from the use of all such information.



REPORT OF MATERIAL TEST

DATE: MAR.04,2010

Customer: 明昌金屬有限公司

Commodity: C 2680 R BRASS STRIP (H)

ISO 9002:4MSYC35-00
台正字第 3544 號

Applied Standard: CNS 4383 Brass Sheets, Plates and Strips.

Chemical Analysis Test

Work No.	Size of Product			Cu(%)	Fe(%)	Pb(%)	Zn(%)			P.O. NUMBER
	Thickness (mm)	Width (mm)	Length (mm)							
	Standard									
				64.00 - 68.00	MAX. 0.050	MAX. 0.014	REM.			
91A447A	0.250	39.000		65.800	0.007	0.004	REM.			
91A447A	0.250	72.000		65.800	0.007	0.004	REM.			
91A447B	0.250	39.000		65.800	0.007	0.004	REM.			
91A447E	0.250	72.000		65.800	0.007	0.004	REM.			

Mechanical & Physical Test

Work No.	Size of Product			Dimension Test		Tension Test		Hardness Test	Grain Size	Electric Conductivity
	Thickness (mm)	Width (mm)	Length (mm)	Thickness (mm)	Width (mm)	Tensile Strength (kgf/mm ²)	Elongation (%)	HV	(mm)	(%)
	Standard			-	(-) 0.06 - (+) 0.06	42 - 55	-	135 - 145	-	-
91A447A	0.250	39.000		GOOD.	GOOD.	48.15	22.46	144.0 - 145.0	-	25.5
91A447A	0.250	72.000		GOOD.	GOOD.	48.15	22.46	144.0 - 145.0	-	25.5
91A447B	0.250	39.000		GOOD.	GOOD.	48.15	22.46	144.0 - 145.0	-	25.5
91A447B	0.250	72.000		GOOD.	GOOD.	48.15	22.46	144.0 - 145.0	-	25.5

QC Supervisor

鄭建益

A 20202

MINCHALI METAL INDUSTRY CO., LTD.

11, Pei Yuan Road, Chung Li City, Taiwan, R. O. C.

Tel : (03)4526141-5 (03)4526017-9

NO. 093

MINCHALI

4. MAR. 2010 16:17



REPORT OF MATERIAL TEST

DATE: JULY 21, 2008

Customer: 國慶精密股份有限公司

Commodity: C 5191 R PHOSPHOR BRONZE STRIP (H)

ISO 9002:4M8Y035-00
台正字第 3545 號

Applied Standard: CNS 9503 Phosphor Bronze Sheets, Plates and Strips

Chemical Analysis Test

Work No.	Size of Product			P(%)	Sn(%)	Cu+Sn+P(%)				
	Thickness (mm)	Width (mm)	Length (mm)							
	Standard									
				0.030 - 0.350	5.50 - 7.00	min. 99.50				
87C014A	0.200	624.000		0.116	5.830	99.955	3231			
87C014B	0.200	624.000		0.116	5.830	99.955	3068			
87C089B	0.250	622.000		0.144	6.064	99.953	2650			
87C088A	0.250	623.000		0.137	6.054	99.960	2695			

Mechanical & Physical Test

Work No.	Size of Product			Dimension Test		Tension Test		Hardness Test HV	Grain Size (mm)	Electric Conductivity (%)
	Thickness (mm)	Width (mm)	Length (mm)	Thickness (mm)	Width (mm)	Tensile Strength (kgf/mm ²)	Elongation (%)			
	Standard			(-) 0.010 - (+) 0.000	(-) 0.10 - (+) 0.00	60 - 70	min. 8			
87C014A	0.200	624.000		0.200	GOOD.	60.92	23.34	186.0 - 187.0	-	15.2
87C014B	0.200	624.000		0.200	GOOD.	60.92	23.34	186.0 - 187.0	-	15.2
87C089B	0.250	622.000		0.248	GOOD.	62.58	22.92	194.0 - 195.0	-	14.2
87C088A	0.250	623.000		0.246	GOOD.	62.60	22.60	194.0 - 195.0	-	14.2

QC Supervisor

鄭建益

A920303

MINCHALI METAL INDUSTRY CO., LTD.

11, Pei Yuan Road, Chung Li City, Taiwan, R. O. C.

Tel : (03)4526141-5 (03)4526017-9

Fax : (03)4529112 (03)4629625



Test Report

No. NGBML1201536501

Date: 06 Sep 2012

Page 1 of 5

YUEQING HUAXIN ELECTRONICS CO.,LTD.

(EAST TOWN INDUSTRIAL DISTRICT) 917NUMBER,HAPPY EAST ROAD HONGQIAO ,YUEQING,
ZHEJIANG

The following sample(s) was/were submitted and identified on behalf of the clients as : NYLON

SGS Job No. : NBMLC120800200 - NB
Material and Mark : PA46
Buyer : WANG JIN LING
Manufacturer : WANG JIN LING
Date of Sample Received : 31 Aug 2012
Testing Period : 31 Aug 2012 - 06 Sep 2012
Test Requested : Selected test(s) as requested by client.
Test Method : Please refer to next page(s).
Test Results : Please refer to next page(s).

Signed for and on behalf of
SGS-CSTC Ltd.

XiaoLingYan, Iris
Approved Signatory

This document is issued by the Company subject to its General Conditions of Service printed overleaf, available on request or accessible at http://www.sgs.com/terms_and_conditions.
him and, for electronic format documents, subject to Terms and Conditions for Electronic Documents at www.sgs.com/terms_e-document.htm. Attention is drawn to the limitation of
liability, indemnification and jurisdiction issues defined therein. Any holder of this document is advised that information contained hereon reflects the Company's findings at the time of
its intervention only and within the limits of Client's instructions, if any. The Company's sole responsibility is to its Client and this document does not exonerate parties to a transaction
from exercising all their rights and obligations under the transaction documents. This document cannot be reproduced except in full, without prior written approval of the Company.
Any unauthorized alteration, forgery or falsification of the content or appearance of this document is unlawful and offenders may be prosecuted to the fullest extent of the law.
Unless otherwise stated the results shown in this test report refer only to the sample(s) tested.

Attention: To ensure the authenticity of testing, inspection report & certificate, please contact us at telephone: (86-755) 85071443, or email: CN_Doccheck@sgs.com

SGS-CSTC Standards Technical Service Co., Ltd. 125F West No. 4 Building, Lingyin Industry Park, No. 1177 Lingyin Road, Ningbo National Hi-Tech Zone, Ningbo, China 315040 TEL: (86-574) 89070224 FAX: (86-574) 87782095 www.cn.sgs.com
Ningbo Branch of SGS-CSTC Standards Technical Service Co., Ltd. 中国·宁波·国家高新区凌云路1177号凌云产业园4号楼西1-2.5层 邮编: 315040 HL: (86-574) 89070209 HL: (86-574) 87768122 e sgs.china@sgs.com

Member of the SGS Group (SGS SA)



Test Report

No. NGBML1201536501

Date: 06 Sep 2012

Page 2 of 5

Test Results :

Test Part Description :

Specimen No.	SGS Sample ID	Description
1	NGB12-015365.001	BLACK PLASTIC PELLET

Remarks :

- (1) 1 mg/kg = 1 ppm = 0.0001%
- (2) MDL = Method Detection Limit
- (3) ND = Not Detected (< MDL)
- (4) "-" = Not Regulated

RoHS Directive 2011/65/EU

Test Method : With reference to IEC 62321:2008

- (1) Determination of Cadmium by ICP-OES.
- (2) Determination of Lead by ICP-OES.
- (3) Determination of Mercury by ICP-OES.
- (4) Determination of Hexavalent Chromium by Colorimetric Method using UV-Vis.
- (5) Determination of PBBs / PBDEs content by GC-MS.

Test Item(s)	Limit	Unit	MDL	001
Cadmium (Cd)	100	mg/kg	2	ND
Lead (Pb)	1000	mg/kg	2	11
Mercury (Hg)	1000	mg/kg	2	ND
Hexavalent Chromium (CrVI)	1000	mg/kg	2	ND
Sum of PBBs	1000	mg/kg	-	ND
Monobromobiphenyl	-	mg/kg	5	ND
Dibromobiphenyl	-	mg/kg	5	ND
Tribromobiphenyl	-	mg/kg	5	ND
Tetrabromobiphenyl	-	mg/kg	5	ND
Pentabromobiphenyl	-	mg/kg	5	ND
Hexabromobiphenyl	-	mg/kg	5	ND
Heptabromobiphenyl	-	mg/kg	5	ND
Octabromobiphenyl	-	mg/kg	5	ND
Nonabromobiphenyl	-	mg/kg	5	ND
Decabromobiphenyl	-	mg/kg	5	ND
Sum of PBDEs	1000	mg/kg	-	ND
Monobromodiphenyl ether	-	mg/kg	5	ND

This document is issued by the Company subject to its General Conditions of Service printed overleaf, available on request or accessible at http://www.sgs.com/terms_and_conditions.htm and for electronic format documents, subject to Terms and Conditions for Electronic Documents at www.sgs.com/terms_e-document.htm. Attention is drawn to the limitation of liability, indemnification and jurisdiction issues defined therein. Any holder of this document is advised that information contained hereon reflects the Company's findings at the time of its intervention only and within the limits of Client's instructions, if any. The Company's sole responsibility is to its Client and this document does not exonerate parties to a transaction from exercising all their rights and obligations under the transaction documents. This document cannot be reproduced except in full, without prior written approval of the Company. Any unauthorized alteration, forgery or falsification of the content or appearance of this document is unlawful and offenders may be prosecuted to the fullest extent of the law. Unless otherwise stated the results shown in this test report refer only to the sample(s) tested.

For further information or to request a copy of the full test report, please contact us at telephone: (86-755)83071443, or email: CN.Dqc@sgs.com



Test Report

No. NGBML1201536501

Date: 06 Sep 2012

Page 3 of 5

Test Item(s)	Limit	Unit	MDL	001
Dibromodiphenyl ether	-	mg/kg	5	ND
Tribromodiphenyl ether	-	mg/kg	5	ND
Tetrabromodiphenyl ether	-	mg/kg	5	ND
Pentabromodiphenyl ether	-	mg/kg	5	ND
Hexabromodiphenyl ether	-	mg/kg	5	ND
Heptabromodiphenyl ether	-	mg/kg	5	ND
Octabromodiphenyl ether	-	mg/kg	5	ND
Nonabromodiphenyl ether	-	mg/kg	5	ND
Decabromodiphenyl ether	-	mg/kg	5	ND

Notes :

- (1) The maximum permissible limit is quoted from directive 2011/65/EU, Annex II

This document is issued by the Company subject to its General Conditions of Service printed overleaf, available on request or accessible at http://www.sgs.com/terms_and_conditions.htm and, for electronic format documents, subject to Terms and Conditions for Electronic Documents at www.sgs.com/terms_e-document.htm. Attention is drawn to the limitation of liability, indemnification and jurisdiction issues defined therein. Any holder of this document is advised that information contained hereon reflects the Company's findings at the time of its intervention only and within the limits of Client's instructions, if any. The Company's sole responsibility is to its Client and this document does not exonerate parties to a transaction from exercising all their rights and obligations under the transaction documents. This document cannot be reproduced except in full, without prior written approval of the Company. Any unauthorized alteration, forgery or falsification of the content or appearance of this document is unlawful and offenders may be prosecuted to the fullest extent of the law. Unless otherwise stated, the results shown in this test report refer only to the sample(s) tested.

Attention: To ensure the authenticity of testing inspection report & certificate, please contact us at telephone: (86-755)83071443, or email: CN Doccheck@sgs.com

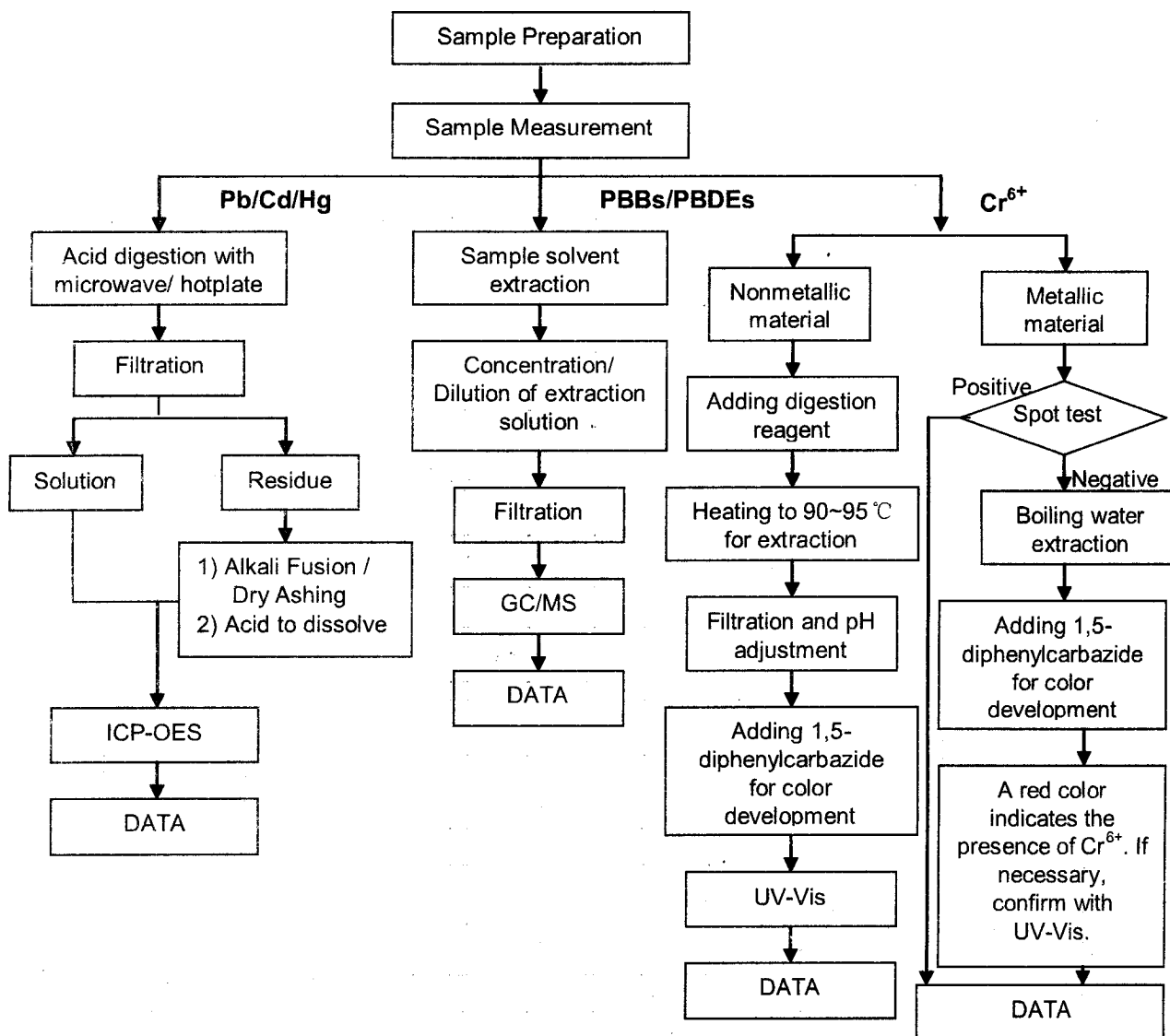
SGS-CTI Standards Technical Services Co., Ltd. | 123F West No. 4 Building, Liangzui Industry Park, No. 1177 Liangzui Road, Ningbo National Hi-Tech Zone, Ningbo, China 315040 | E&E (86-574) 89070224 | E&E (86-574) 87782086 | www.cn.sgs.com
Ningbo Branch | Ningbo Branch | Ningbo Branch | 中国·宁波·国家高新区梁云路1177号凌云产业园4号楼西1-2.5层 邮编: 315040 | HL: (86-574) 89070209 | HL: (86-574) 87768122 | e: sgs.china@sgs.com

Member of the SGS Group (SGS SA)

ATTACHMENTS

RoHS Testing Flow Chart

- 1) Name of the person who made testing: John Zhu/ Kell Li / Pearson Zhou
- 2) Name of the person in charge of testing: Sharon Liu
- 3) These samples were dissolved totally by pre-conditioning method according to below flow chart. (Cr^{6+} and PBBs/PBDEs test method excluded)



This document is issued by the Company subject to its General Conditions of Service printed overleaf, available on request or accessible at http://www.sgs.com/terms_and_conditions.htm and, for electronic format documents, subject to Terms and Conditions for Electronic Documents at www.sgs.com/terms_e-document.htm. Attention is drawn to the limitation of liability, indemnification and jurisdiction issues defined therein. Any holder of this document is advised that information contained hereon reflects the Company's findings at the time of its intervention only and within the limits of Client's instructions, if any. The Company's sole responsibility is to its Client and this document does not exonerate parties to a transaction from exercising all their rights and obligations under the transaction documents. This document cannot be reproduced except in full, without prior written approval of the Company. Any unauthorized alteration, forgery or falsification of the content or appearance of this document is unlawful and offenders may be prosecuted to the fullest extent of the law. Unless otherwise stated, the results shown in this test report refer only to the sample(s) tested.

Attention: Test results are the property of testing/inspection report & certificate, please contact us at telephone: (86-755)83071443, or email: CN.Doccheck@sgs.com

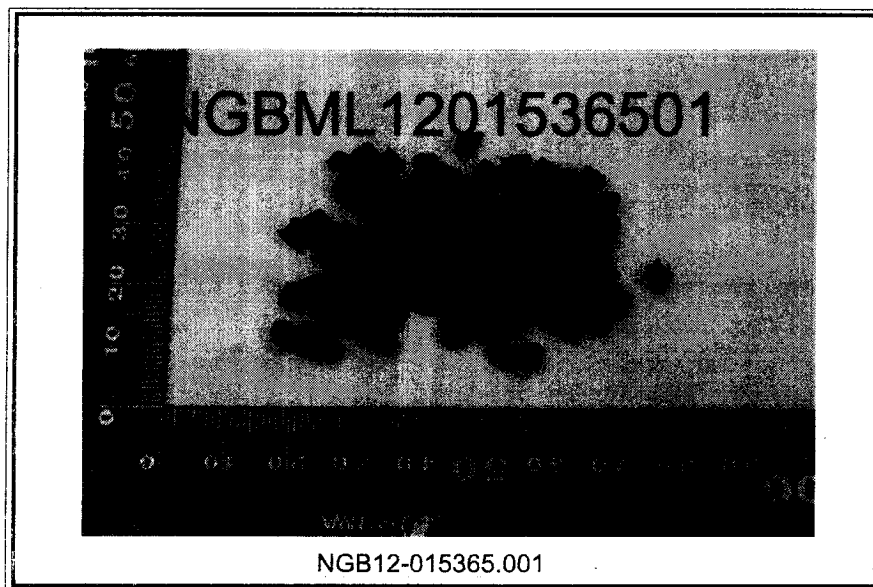
Test Report

No. NGBML1201536501

Date: 06 Sep 2012

Page 5 of 5

Sample photo:



SGS authenticate the photo on original report only

*** End of Report ***

This document is issued by the Company subject to its General Conditions of Service printed overleaf, available on request or accessible at http://www.sgs.com/terms_and_conditions.htm and, for electronic format documents, subject to Terms and Conditions for Electronic Documents at www.sgs.com/terms_e-document.htm. Attention is drawn to the limitation of liability, indemnification and jurisdiction issues defined therein. Any holder of this document is advised that information contained hereon reflects the Company's findings at the time of its intervention only and within the limits of Client's instructions, if any. The Company's sole responsibility is to its Client and this document does not exonerate parties to a transaction from exercising all their rights and obligations under the transaction documents. This document cannot be reproduced except in full, without prior written approval of the Company. Any unauthorized alteration, forgery or falsification of the content or appearance of this document is unlawful and offenders may be prosecuted to the fullest extent of the law. Unless otherwise stated the results shown in this test report refer only to the sample(s) tested.

Attention: To ensure the authenticity of testing inspection report & certificate, please contact us at telephone: (86-755) 83071447, or email: CN.Doccheck@sgs.com

Test Report

No. CANEC1211542206

Date: 29 Aug 2012

Page 1 of 4

FOSHAN TIANQI COPPER INDUSTRY CO.,LTD.

HING KEI BLOCK GUIHE ROAD DALI TOWN NANHAI FOSHAN GUANGDONG
CHINA

This report is to supersede test report CANEC1210897806

The following sample(s) was/were submitted and identified on behalf of the clients as : BRASS STRIP(C2680)

SGS Job No. : CP12-041022 - GZ
Tested Sample Info. : C2680
Date of Sample Received : 11 Aug 2012
Testing Period : 11 Aug 2012 - 17 Aug 2012
Test Requested : Selected test(s) as requested by client.
Test Method : Please refer to next page(s).
Test Results : Please refer to next page(s).

Signed for and on behalf of
SGS-CSTC Ltd.



Kenny Wang
Approved Signatory



This document is issued by the Company subject to its General Conditions of Service printed overleaf, available on request or accessible at http://www.sgs.com/terms_and_conditions.htm and, for electronic format documents, subject to Terms and Conditions for Electronic Documents at www.sgs.com/terms_e-document.htm. Attention is drawn to the limitation of liability, indemnification and jurisdiction issues defined therein. Any holder of this document is advised that information contained hereon reflects the Company's findings at the time of its interpretation only and within the limits of Client's instructions, if any. The Company's sole responsibility is to its Client and this document does not exonerate parties to a transaction from exercising all their rights and obligations under the transaction documents. This document cannot be reproduced except in full, without prior written approval of the Company. Any unauthorized alteration, forgery or falsification of the content or appearance of this document is unlawful and offenders may be prosecuted to the fullest extent of the law. Unless otherwise stated the results shown in this test report refer only to the sample(s) tested.

Test Report

No. CANEC1211542206

Date: 29 Aug 2012

Page 2 of 4

Test Results :

Test Part Description :

Specimen No.	SGS Sample ID	Description
1	CAN12-115422.004	Brassy metal sheet

Remarks :

- (1) 1 mg/kg = 1 ppm = 0.0001%
- (2) MDL = Method Detection Limit
- (3) ND = Not Detected (< MDL)
- (4) "-" = Not Regulated

Elementary Analysis

Test Method : With reference to IEC 62321:2008

- (1) Determination of Cadmium by ICP-OES.
- (2) Determination of Lead by ICP-OES.
- (3) Determination of Mercury by ICP-OES.
- (4) Determination of Hexavalent Chromium by Spot test / Colorimetric Method using UV-Vis.

<u>Test Item(s)</u>	<u>Unit</u>	<u>MDL</u>	<u>004</u>
Cadmium (Cd)	mg/kg	2	ND
Lead (Pb)	mg/kg	2	11
Mercury (Hg)	mg/kg	2	ND
Hexavalent Chromium (CrVI)	-	◇	Negative

Notes :

(1)◇Spot-test:

Negative = Absence of CrVI coating, Positive = Presence of CrVI coating;

(The tested sample should be further verified by boiling-water-extraction method if the spot test result is Negative or cannot be confirmed.)

◇Boiling-water-extraction:

Negative = Absence of CrVI coating

Positive = Presence of CrVI coating; the detected concentration in boiling-water-extraction solution is equal or greater than 0.02 mg/kg with 50 cm² sample surface area.

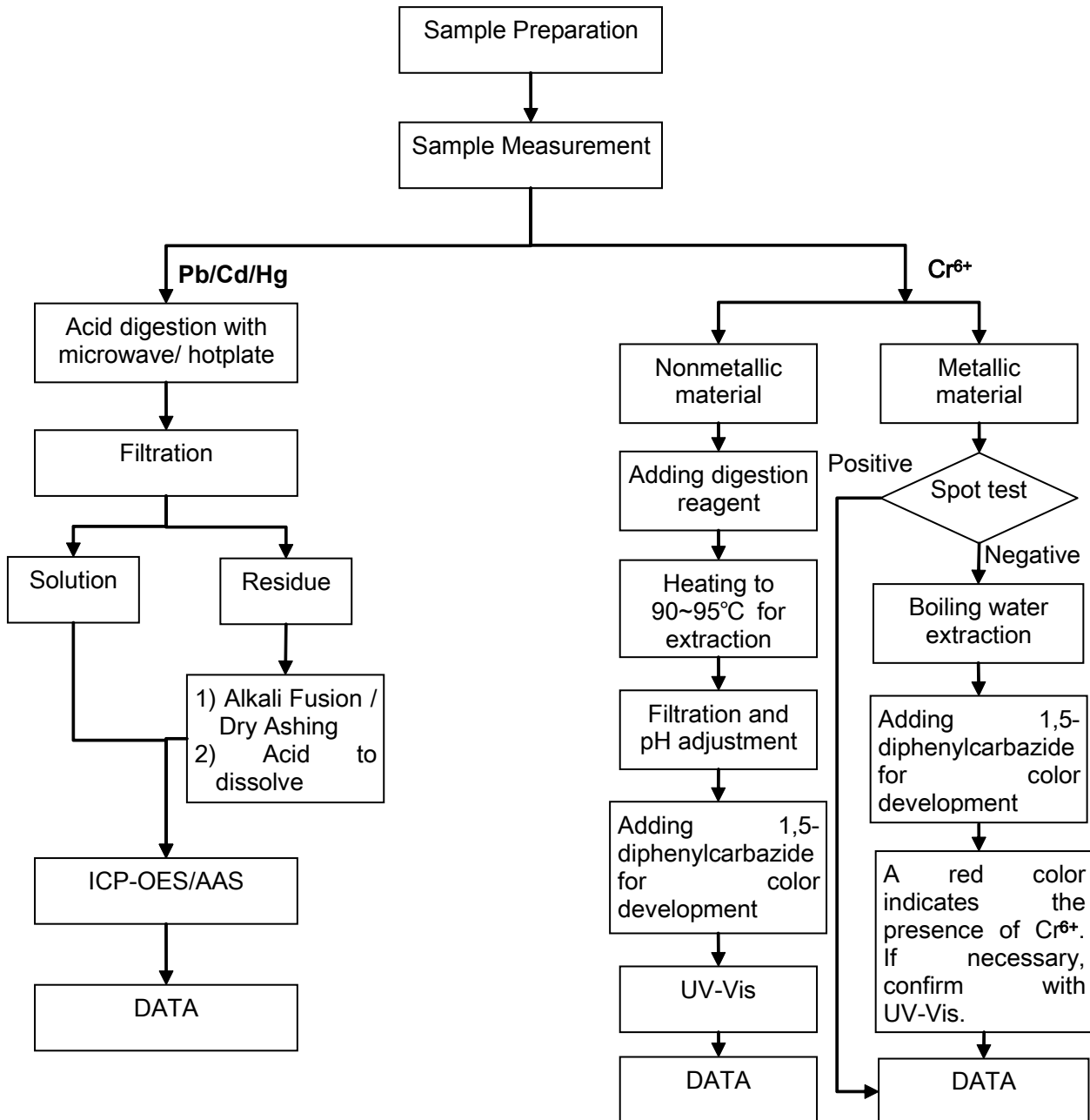
For corrosion protection coatings on metals: Information on storage conditions and production date of the tested sample is unavailable and thus results of Cr(VI) represent status of the sample at the time of testing.

This document is issued by the Company subject to its General Conditions of Service printed overleaf, available on request or accessible at http://www.sgs.com/terms_and_conditions.htm and, for electronic format documents, subject to Terms and Conditions for Electronic Documents at www.sgs.com/terms_e-document.htm. Attention is drawn to the limitation of liability, indemnification and jurisdiction issues defined therein. Any holder of this document is advised that information contained hereon reflects the Company's findings at the time of its interpretation only and within the limits of Client's instructions, if any. The Company's sole responsibility is to its Client and this document does not exonerate parties to a transaction from exercising all their rights and obligations under the transaction documents. This document cannot be reproduced except in full, without prior written approval of the Company. Any unauthorized alteration, forgery or falsification of the content or appearance of this document is unlawful and offenders may be prosecuted to the fullest extent of the law. Unless otherwise stated, the results shown in this test report refer only to the sample(s) tested.

ATTACHMENTS

RoHS Testing Flow Chart

- 1) Name of the person who made testing: Bella Wang
- 2) Name of the person in charge of testing: Adams Yu
- 3) These samples were dissolved totally by pre-conditioning method according to below flow chart (Cr6+ test method excluded).



This document is issued by the Company subject to its General Conditions of Service printed overleaf, available on request or accessible at http://www.sgs.com/terms_and_conditions.htm and, for electronic format documents, subject to Terms and Conditions for Electronic Documents at www.sgs.com/terms_e-document.htm. Attention is drawn to the limitation of liability, indemnification and jurisdiction issues defined therein. Any holder of this document is advised that information contained hereon reflects the Company's findings at the time of its interpretation only and within the limits of Client's instructions, if any. The Company's sole responsibility is to its Client and this document does not exonerate parties to a transaction from exercising all their rights and obligations under the transaction documents. This document cannot be reproduced except in full, without prior written approval of the Company. Any unauthorized alteration, forgery or falsification of the content or appearance of this document is unlawful and offenders may be prosecuted to the fullest extent of the law. Unless otherwise stated, the results shown in this test report refer only to the sample(s) tested.

Test Report

No. CANEC1211542206

Date: 29 Aug 2012

Page 4 of 4

Sample photo:



SGS authenticate the photo on original report only

*** End of Report ***

This document is issued by the Company subject to its General Conditions of Service printed overleaf, available on request or accessible at http://www.sgs.com/terms_and_conditions.htm and, for electronic format documents, subject to Terms and Conditions for Electronic Documents at www.sgs.com/terms_e-document.htm. Attention is drawn to the limitation of liability, indemnification and jurisdiction issues defined therein. Any holder of this document is advised that information contained hereon reflects the Company's findings at the time of its interpretation only and within the limits of Client's instructions, if any. The Company's sole responsibility is to its Client and this document does not exonerate parties to a transaction from exercising all their rights and obligations under the transaction documents. This document cannot be reproduced except in full, without prior written approval of the Company. Any unauthorized alteration, forgery or falsification of the content or appearance of this document is unlawful and offenders may be prosecuted to the fullest extent of the law. Unless otherwise stated, the results shown in this test report refer only to the sample(s) tested.

Test Report

No. CANEC1211542204

Date: 29 Aug 2012

Page 1 of 4

FOSHAN TIANQI COPPER INDUSTRY CO.,LTD.

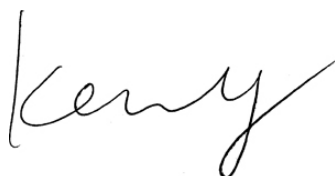
HING KEI BLOCK GUIHE ROAD DALI TOWN NANHAI FOSHAN GUANGDONG
CHINA

This report is to supersede test report CANEC1210897804

The following sample(s) was/were submitted and identified on behalf of the clients as : PHOSPHOR BRONZE STRIP(C5191) ;

SGS Job No. : CP12-041022 - GZ
Tested Sample Info. : C5191
Date of Sample Received : 11 Aug 2012
Testing Period : 11 Aug 2012 - 17 Aug 2012
Test Requested : Selected test(s) as requested by client.
Test Method : Please refer to next page(s).
Test Results : Please refer to next page(s).

Signed for and on behalf of
SGS-CSTC Ltd.



Kenny Wang
Approved Signatory



This document is issued by the Company subject to its General Conditions of Service printed overleaf, available on request or accessible at http://www.sgs.com/terms_and_conditions.htm and, for electronic format documents, subject to Terms and Conditions for Electronic Documents at www.sgs.com/terms_e-document.htm. Attention is drawn to the limitation of liability, indemnification and jurisdiction issues defined therein. Any holder of this document is advised that information contained hereon reflects the Company's findings at the time of its interpretation only and within the limits of Client's instructions, if any. The Company's sole responsibility is to its Client and this document does not exonerate parties to a transaction from exercising all their rights and obligations under the transaction documents. This document cannot be reproduced except in full, without prior written approval of the Company. Any unauthorized alteration, forgery or falsification of the content or appearance of this document is unlawful and offenders may be prosecuted to the fullest extent of the law. Unless otherwise stated the results shown in this test report refer only to the sample(s) tested.



Test Report

No. CANEC1211542204

Date: 29 Aug 2012

Page 2 of 4

Test Results :

Test Part Description :

Specimen No.	SGS Sample ID	Description
1	CAN12-115422.003	Copper-colored metal sheet

Remarks :

- (1) 1 mg/kg = 1 ppm = 0.0001%
- (2) MDL = Method Detection Limit
- (3) ND = Not Detected (< MDL)
- (4) "-" = Not Regulated

Elementary Analysis

Test Method : With reference to IEC 62321:2008

- (1) Determination of Cadmium by ICP-OES.
- (2) Determination of Lead by ICP-OES.
- (3) Determination of Mercury by ICP-OES.
- (4) Determination of Hexavalent Chromium by Spot test / Colorimetric Method using UV-Vis.

<u>Test Item(s)</u>	<u>Unit</u>	<u>MDL</u>	<u>003</u>
Cadmium (Cd)	mg/kg	2	ND
Lead (Pb)	mg/kg	2	12
Mercury (Hg)	mg/kg	2	ND
Hexavalent Chromium (CrVI)	-	◇	Negative

Notes :

(1)◇Spot-test:

Negative = Absence of CrVI coating, Positive = Presence of CrVI coating;

(The tested sample should be further verified by boiling-water-extraction method if the spot test result is Negative or cannot be confirmed.)

◇Boiling-water-extraction:

Negative = Absence of CrVI coating

Positive = Presence of CrVI coating; the detected concentration in boiling-water-extraction solution is equal or greater than 0.02 mg/kg with 50 cm² sample surface area.

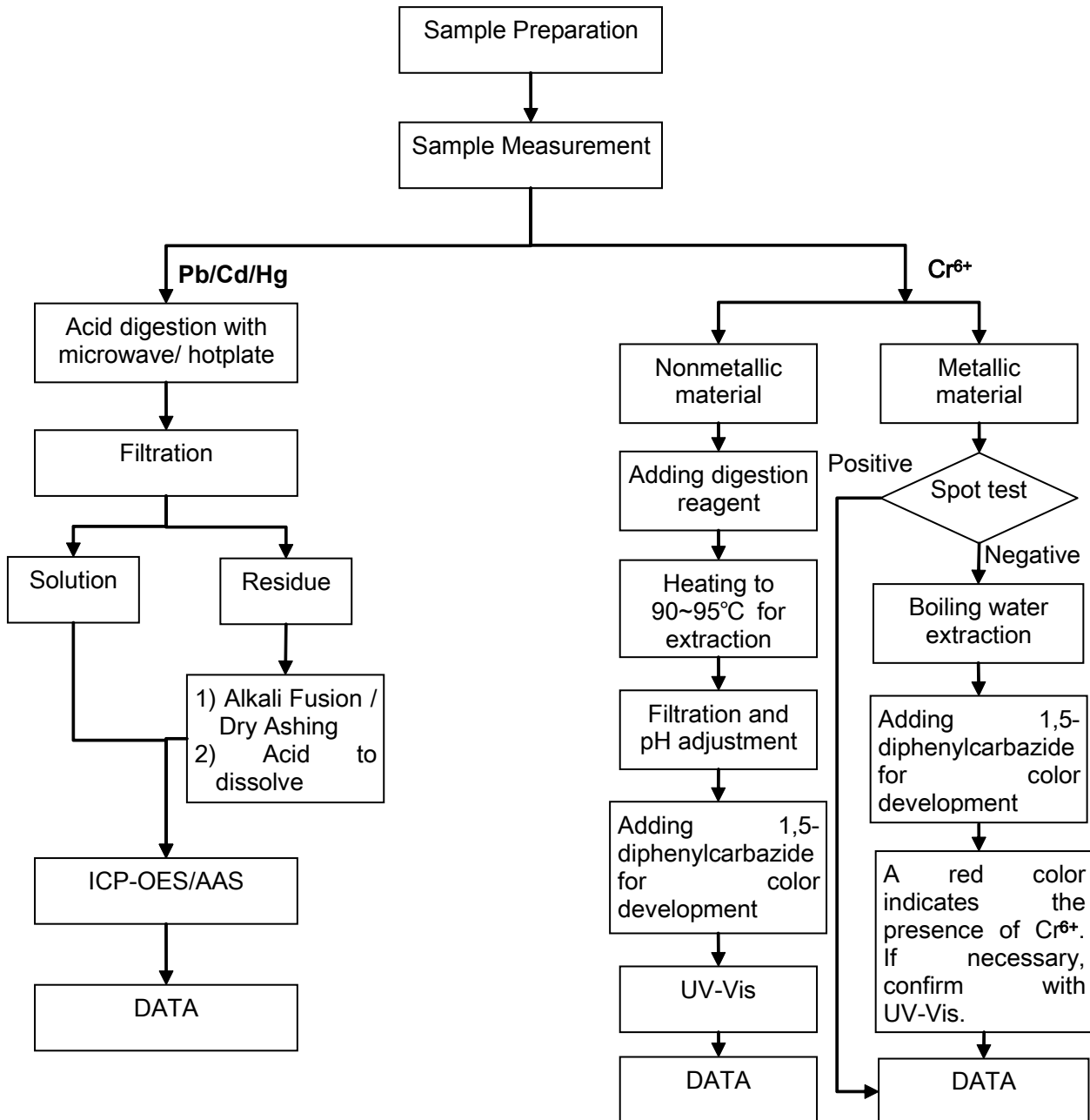
For corrosion protection coatings on metals: Information on storage conditions and production date of the tested sample is unavailable and thus results of Cr(VI) represent status of the sample at the time of testing.

This document is issued by the Company subject to its General Conditions of Service printed overleaf, available on request or accessible at http://www.sgs.com/terms_and_conditions.htm and, for electronic format documents, subject to Terms and Conditions for Electronic Documents at www.sgs.com/terms_e-document.htm. Attention is drawn to the limitation of liability, indemnification and jurisdiction issues defined therein. Any holder of this document is advised that information contained hereon reflects the Company's findings at the time of its interpretation only and within the limits of Client's instructions, if any. The Company's sole responsibility is to its Client and this document does not exonerate parties to a transaction from exercising all their rights and obligations under the transaction documents. This document cannot be reproduced except in full, without prior written approval of the Company. Any unauthorized alteration, forgery or falsification of the content or appearance of this document is unlawful and offenders may be prosecuted to the fullest extent of the law. Unless otherwise stated, the results shown in this test report refer only to the sample(s) tested.

ATTACHMENTS

RoHS Testing Flow Chart

- 1) Name of the person who made testing: Bella Wang
- 2) Name of the person in charge of testing: Adams Yu
- 3) These samples were dissolved totally by pre-conditioning method according to below flow chart (Cr6+ test method excluded).



This document is issued by the Company subject to its General Conditions of Service printed overleaf, available on request or accessible at http://www.sgs.com/terms_and_conditions.htm and, for electronic format documents, subject to Terms and Conditions for Electronic Documents at www.sgs.com/terms_e-document.htm. Attention is drawn to the limitation of liability, indemnification and jurisdiction issues defined therein. Any holder of this document is advised that information contained hereon reflects the Company's findings at the time of its interpretation only and within the limits of Client's instructions, if any. The Company's sole responsibility is to its Client and this document does not exonerate parties to a transaction from exercising all their rights and obligations under the transaction documents. This document cannot be reproduced except in full, without prior written approval of the Company. Any unauthorized alteration, forgery or falsification of the content or appearance of this document is unlawful and offenders may be prosecuted to the fullest extent of the law. Unless otherwise stated, the results shown in this test report refer only to the sample(s) tested.

Test Report

No. CANEC1211542204

Date: 29 Aug 2012

Page 4 of 4

Sample photo:



SGS authenticate the photo on original report only

*** End of Report ***

This document is issued by the Company subject to its General Conditions of Service printed overleaf, available on request or accessible at http://www.sgs.com/terms_and_conditions.htm and, for electronic format documents, subject to Terms and Conditions for Electronic Documents at www.sgs.com/terms_e-document.htm. Attention is drawn to the limitation of liability, indemnification and jurisdiction issues defined therein. Any holder of this document is advised that information contained hereon reflects the Company's findings at the time of its interpretation only and within the limits of Client's instructions, if any. The Company's sole responsibility is to its Client and this document does not exonerate parties to a transaction from exercising all their rights and obligations under the transaction documents. This document cannot be reproduced except in full, without prior written approval of the Company. Any unauthorized alteration, forgery or falsification of the content or appearance of this document is unlawful and offenders may be prosecuted to the fullest extent of the law. Unless otherwise stated, the results shown in this test report refer only to the sample(s) tested.

测试报告

No. NGBEC1201943402

日期: 2012年11月06日

第1页,共4页

余姚市楷瑞电子有限公司

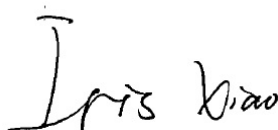
中国浙江省余姚市泗门镇相公潭村

以下测试之样品是由申请者所提供及确认: 镀金镀锡铜端子

SGS工作编号: NP12-001623 - NB
样品接收日期: 2012年11月02日
测试周期: 2012年11月02日 - 2012年11月06日
测试要求: 根据客户要求测试
测试方法: 请参见下一页
测试结果: 请参见下一页

通标标准技术服务有限公司

授权签名



Iris Xiao 肖玲艳

批准签署人

本报告是编号为NGBEC1201943401报告的中文版本

This document is issued by the Company subject to its General Conditions of Service printed overleaf, available on request or accessible at http://www.sgs.com/terms_and_conditions.htm and, for electronic format documents, subject to Terms and Conditions for Electronic Documents at www.sgs.com/terms_e-document.htm. Attention is drawn to the limitation of liability, indemnification and jurisdiction issues defined therein. Any holder of this document is advised that information contained hereon reflects the Company's findings at the time of its intervention only and within the limits of Client's instructions, if any. The Company's sole responsibility is to its Client and this document does not exonerate parties to a transaction from exercising all their rights and obligations under the transaction documents. This document cannot be reproduced except in full, without prior written approval of the Company. Any unauthorized alteration, forgery or falsification of the content or appearance of this document is unlawful and offenders may be prosecuted to the fullest extent of the law. Unless otherwise stated the results shown in this test report refer only to the sample(s) tested.

Attention: To ensure the authenticity of testing / inspection report & certificate, please contact us at telephone: (86-755)83071443, or email: CN.Doccheck@sgs.com

测试报告

No. NGBEC1201943402

日期: 2012年11月06日

第2页,共4页

测试结果:

测试样品描述:

样品编号	SGS样品ID	描述
1	NGB12-019434.001	银色铜色金属 (混合)

备注:

- (1) 1 mg/kg = 1 ppm = 0.0001%
- (2) MDL = 方法检测限
- (3) ND = 未检出 (< MDL)
- (4) "-" = 未规定

RoHS指令2011/65/EU

测试方法:

参考IEC 62321:2008:

- (1) 用ICP-OES测定镉的含量.
- (2) 用ICP-OES测定铅的含量.
- (3) 用ICP-OES测定汞的含量.
- (4) 用点测试法/紫外-可见分光光度计比色法测定六价铬的含量.

测试项目	限值	单位	MDL	001
镉 (Cd)	100	mg/kg	2	ND
铅 (Pb)	1000	mg/kg	2	23
汞 (Hg)	1000	mg/kg	2	ND
六价铬 (CrVI)	-	-	◇	阴性

备注:

- (1) 最大允许极限值引用自指令2011/65/EU 附录II.
- (2) ◇点测试法:
阴性= 未检测到六价铬,阳性 = 检测到六价铬;
(当点测试结果为阴性或无法确定时,将采用沸水萃取法作进一步的结果验证.)
◇沸水萃取法:
阴性= 未检测到六价铬
阳性= 检测到六价铬; 表明50 cm²表面积的被测试样品的沸水萃取液中六价铬的浓度等于或大于0.02 mg/kg
针对金属表面的防腐涂层:由于未获知样品的存储条件和生产日期,样品的六价铬测试结果仅代表测试时样品的状态
- (3) 样品基于申请人要求为混合测试. 报告中的混合测试结果不代表其中个别单一材质的含量, 该测试数据仅供参考.

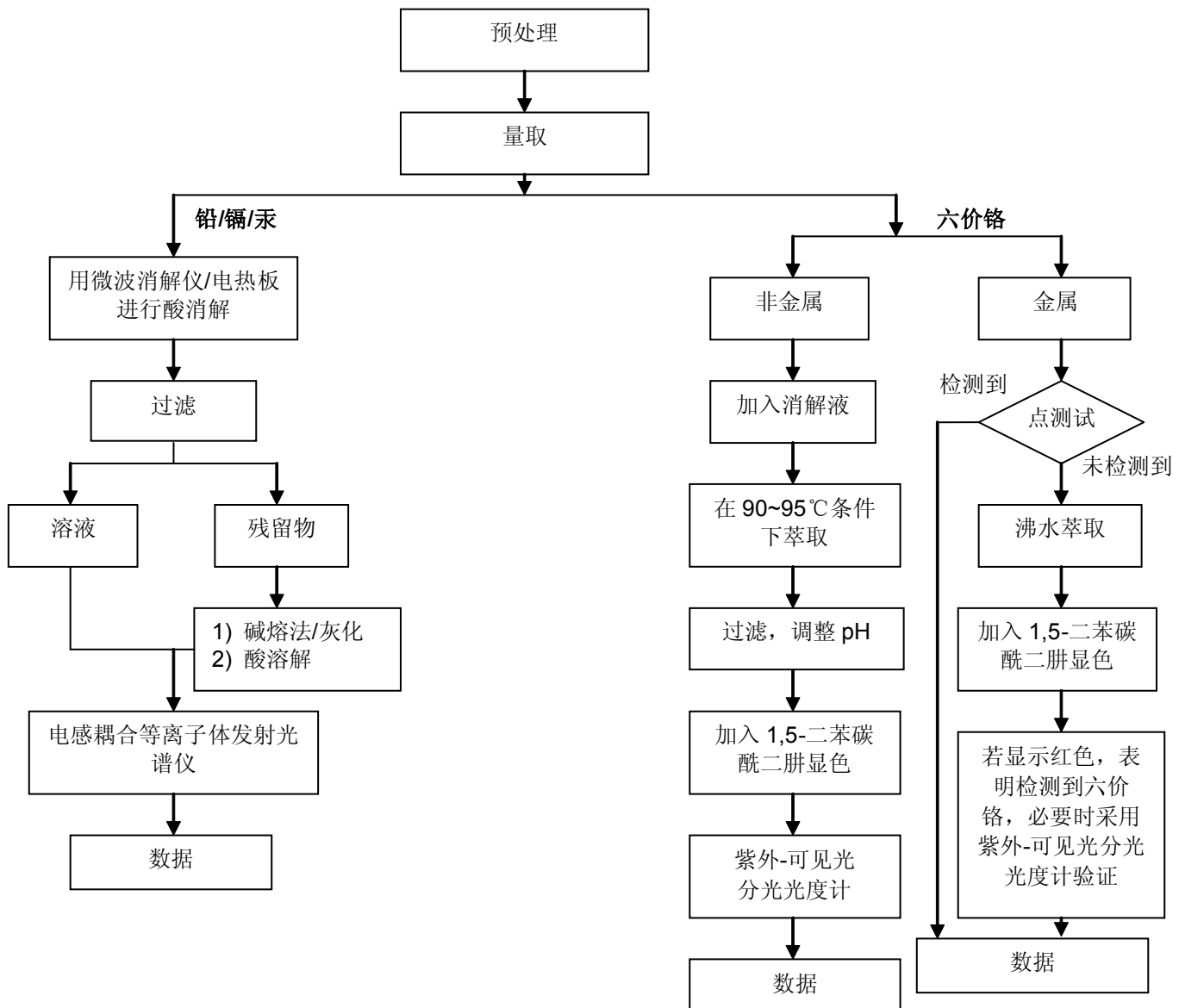
This document is issued by the Company subject to its General Conditions of Service printed overleaf, available on request or accessible at http://www.sgs.com/terms_and_conditions.htm and, for electronic format documents, subject to Terms and Conditions for Electronic Documents at www.sgs.com/terms_e-document.htm. Attention is drawn to the limitation of liability, indemnification and jurisdiction issues defined therein. Any holder of this document is advised that information contained hereon reflects the Company's findings at the time of its intervention only and within the limits of Client's instructions, if any. The Company's sole responsibility is to its Client and this document does not exonerate parties to a transaction from exercising all their rights and obligations under the transaction documents. This document cannot be reproduced except in full, without prior written approval of the Company. Any unauthorized alteration, forgery or falsification of the content or appearance of this document is unlawful and offenders may be prosecuted to the fullest extent of the law. Unless otherwise stated the results shown in this test report refer only to the sample(s) tested.

Attention: To ensure the authenticity of testing / inspection report & certificate, please contact us at telephone: (86-755)83071443, or email: CN.Doccheck@sgs.com

附件

RoHS 测试流程图

- 1) 分析人员: 朱再峰/朱淑娴
- 2) 项目负责人: 李科建
- 3) 样品按照下述流程被完全消解 (六价铬测试除外)



This document is issued by the Company subject to its General Conditions of Service printed overleaf, available on request or accessible at http://www.sgs.com/terms_and_conditions.htm and, for electronic format documents, subject to Terms and Conditions for Electronic Documents at www.sgs.com/terms_e-document.htm. Attention is drawn to the limitation of liability, indemnification and jurisdiction issues defined therein. Any holder of this document is advised that information contained hereon reflects the Company's findings at the time of its intervention only and within the limits of Client's instructions, if any. The Company's sole responsibility is to its Client and this document does not exonerate parties to a transaction from exercising all their rights and obligations under the transaction documents. This document cannot be reproduced except in full, without prior written approval of the Company. Any unauthorized alteration, forgery or falsification of the content or appearance of this document is unlawful and offenders may be prosecuted to the fullest extent of the law. Unless otherwise stated the results shown in this test report refer only to the sample(s) tested.

Attention: To ensure the authenticity of testing / inspection report & certificate, please contact us at telephone: (86-755)83071443, or email: CN.Doccheck@sgs.com

测试报告

No. NGBEC1201943402

日期: 2012年11月06日

第4页,共4页

样品照片:



此照片仅限于随SGS正本报告使用

*** 报告完 ***

This document is issued by the Company subject to its General Conditions of Service printed overleaf, available on request or accessible at http://www.sgs.com/terms_and_conditions.htm and, for electronic format documents, subject to Terms and Conditions for Electronic Documents at www.sgs.com/terms_e-document.htm. Attention is drawn to the limitation of liability, indemnification and jurisdiction issues defined therein. Any holder of this document is advised that information contained hereon reflects the Company's findings at the time of its intervention only and within the limits of Client's instructions, if any. The Company's sole responsibility is to its Client and this document does not exonerate parties to a transaction from exercising all their rights and obligations under the transaction documents. This document cannot be reproduced except in full, without prior written approval of the Company. Any unauthorized alteration, forgery or falsification of the content or appearance of this document is unlawful and offenders may be prosecuted to the fullest extent of the law. Unless otherwise stated the results shown in this test report refer only to the sample(s) tested.

Attention: To ensure the authenticity of testing / inspection report & certificate, please contact us at telephone: (86-755)83071443, or email: CN.Doccheck@sgs.com

测试报告

No. NGBEC1202032302

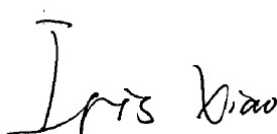
日期: 2012年11月19日 第1页,共3页

余姚市五星金属电镀有限公司
中国浙江省余姚市小曹娥镇滨海村

以下测试之样品是由申请者所提供及确认: 镀镍铜带

SGS工作编号: NP12-001706 - NB
样品接收日期: 2012年11月15日
测试周期: 2012年11月15日 - 2012年11月19日
测试要求: 根据客户要求测试
测试方法: 请参见下一页
测试结果: 请参见下一页
结论: 基于所送样品进行的测试, 镉、铅、汞、六价铬的测试结果符合欧盟RoHS指令2002/95/EC的重订指令2011/65/EU附录II的限值要求。

通标标准技术服务有限公司
授权签名



Iris Xiao 肖玲艳
批准签署人

本报告是编号为NGBEC1202032301报告的中文版本

This document is issued by the Company subject to its General Conditions of Service printed overleaf, available on request or accessible at http://www.sgs.com/terms_and_conditions.htm and, for electronic format documents, subject to Terms and Conditions for Electronic Documents at www.sgs.com/terms_e-document.htm. Attention is drawn to the limitation of liability, indemnification and jurisdiction issues defined therein. Any holder of this document is advised that information contained hereon reflects the Company's findings at the time of its intervention only and within the limits of Client's instructions, if any. The Company's sole responsibility is to its Client and this document does not exonerate parties to a transaction from exercising all their rights and obligations under the transaction documents. This document cannot be reproduced except in full, without prior written approval of the Company. Any unauthorized alteration, forgery or falsification of the content or appearance of this document is unlawful and offenders may be prosecuted to the fullest extent of the law. Unless otherwise stated the results shown in this test report refer only to the sample(s) tested.

Attention: To ensure the authenticity of testing / inspection report & certificate, please contact us at telephone: (86-755)83071443, or email: CN.Doccheck@sgs.com

测试报告

No. NGBEC1202032302

日期: 2012年11月19日

第2页,共3页

测试结果:

测试样品描述:

样品编号	SGS样品ID	描述
1	NGB12-020323.001	银色金属

备注:

- (1) 1 mg/kg = 1 ppm = 0.0001%
- (2) MDL = 方法检测限
- (3) ND = 未检出 (< MDL)
- (4) "-" = 未规定

RoHS指令2011/65/EU

测试方法:

参考IEC 62321:2008:

- (1) 用ICP-OES测定镉的含量.
- (2) 用ICP-OES测定铅的含量.
- (3) 用ICP-OES测定汞的含量.
- (4) 用点测试法/紫外-可见分光光度计比色法测定六价铬的含量.

测试项目	限值	单位	MDL	001
镉 (Cd)	100	mg/kg	2	ND
铅 (Pb)	1000	mg/kg	2	ND
汞 (Hg)	1000	mg/kg	2	ND
六价铬 (CrVI)	-	-	◇	阴性

备注:

- (1) 最大允许极限值引用自指令2011/65/EU 附录II.
- (2) ◇点测试法:
阴性= 未检测到六价铬,阳性 = 检测到六价铬;
(当点测试结果为阴性或无法确定时,将采用沸水萃取法作进一步的结果验证.)
◇沸水萃取法:
阴性= 未检测到六价铬
阳性= 检测到六价铬; 表明50 cm²表面积的被测试样品的沸水萃取液中六价铬的浓度等于或大于0.02 mg/kg
针对金属表面的防腐涂层:由于未获知样品的存储条件和生产日期,样品的六价铬测试结果仅代表测试时样品的状态

This document is issued by the Company subject to its General Conditions of Service printed overleaf, available on request or accessible at http://www.sgs.com/terms_and_conditions.htm and, for electronic format documents, subject to Terms and Conditions for Electronic Documents at www.sgs.com/terms_e-document.htm. Attention is drawn to the limitation of liability, indemnification and jurisdiction issues defined therein. Any holder of this document is advised that information contained hereon reflects the Company's findings at the time of its intervention only and within the limits of Client's instructions, if any. The Company's sole responsibility is to its Client and this document does not exonerate parties to a transaction from exercising all their rights and obligations under the transaction documents. This document cannot be reproduced except in full, without prior written approval of the Company. Any unauthorized alteration, forgery or falsification of the content or appearance of this document is unlawful and offenders may be prosecuted to the fullest extent of the law. Unless otherwise stated the results shown in this test report refer only to the sample(s) tested.

Attention: To ensure the authenticity of testing / inspection report & certificate, please contact us at telephone: (86-755)83071443, or email: CN.Doccheck@sgs.com

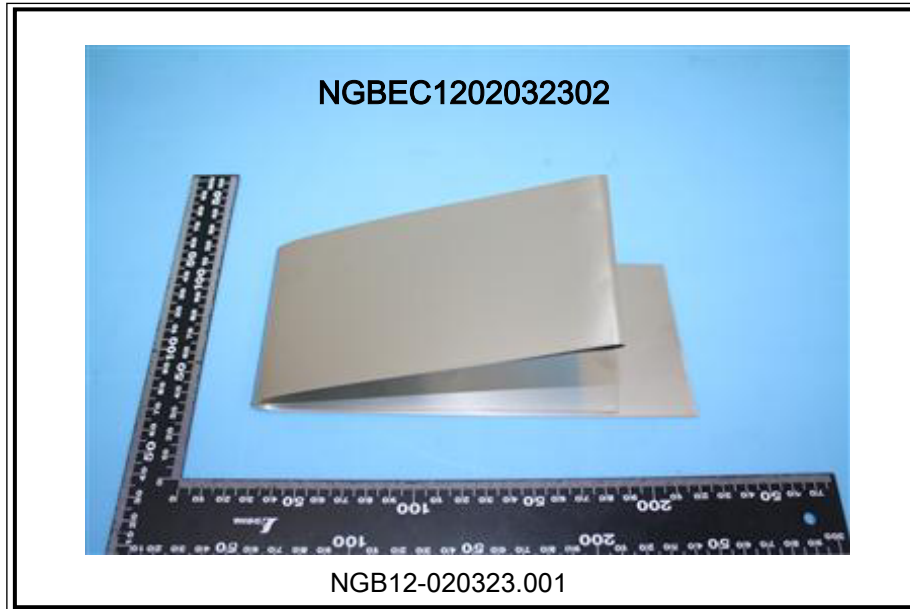
测试报告

No. NGBEC1202032302

日期: 2012年11月19日

第3页,共3页

样品照片:



此照片仅限于随SGS正本报告使用

*** 报告完 ***

This document is issued by the Company subject to its General Conditions of Service printed overleaf, available on request or accessible at http://www.sgs.com/terms_and_conditions.htm and, for electronic format documents, subject to Terms and Conditions for Electronic Documents at www.sgs.com/terms_e-document.htm. Attention is drawn to the limitation of liability, indemnification and jurisdiction issues defined therein. Any holder of this document is advised that information contained hereon reflects the Company's findings at the time of its intervention only and within the limits of Client's instructions, if any. The Company's sole responsibility is to its Client and this document does not exonerate parties to a transaction from exercising all their rights and obligations under the transaction documents. This document cannot be reproduced except in full, without prior written approval of the Company. Any unauthorized alteration, forgery or falsification of the content or appearance of this document is unlawful and offenders may be prosecuted to the fullest extent of the law. Unless otherwise stated the results shown in this test report refer only to the sample(s) tested.

Attention: To ensure the authenticity of testing / inspection report & certificate, please contact us at telephone: (86-755)83071443, or email: CN.Doccheck@sgs.com